

## **Historic, Archive Document**

Do not assume content reflects current scientific knowledge, policies, or practices.





List No-7A  
 Sept 20 1951

Wholesale Only

LIBRARY  
 RECEIVED

JAN 3 1 1952

Department of Agriculture

# TORMEY'S

PRODUCERS OF CAMELLIAS OF MERIT



FOR THE DISCRIMINATING TRADE  
 P.O. BOX 428 - PHONE ATLANTIC 68952  
 TEMPLE CITY, CALIFORNIA

## CAMELLIA LINERS

ONE YEAR PLANTS IN 2-1/2" POTS -

Shipped Only When Ordered In Multiples

Of (50) And Not Less Than (10) Of Any One Variety. Fifty plants are shipped placed upright in "Special Sta-Fresh Cases" shown with some of these plants on the other side of this list. Plants are shipped during all times of the year to reach customers anywhere in the U.S.A., as fresh as the moment they left our establishment, within a week under normal conditions. We make regular shipments of plants to customers in forty five states including All Of The Southern States and comply with all state plant shipping regulations.

- WE PAY THE EXPRESS - WHEN THREE OR MORE - CASES ARE ORDERED -

PLEASE - Use this order form when ordering it will help us with your order.

Prices are per 10 plants.

VARIETY NAME	Qua. 5 to 8"	Qua. 8 to 12"	Amount
	Ten Plants	Ten Plants	
Alba Plena White	\$3.75	\$4.50	
Blood of China Red	3.75	4.50	
Casablanca Pink	3.75	4.50	
Casablanca White	4.75	5.50	
Chandler Elegans Marbled	3.75	4.50	
Chandler Francine Pink	4.75	5.50	
Colonel Firey Red	3.75	4.50	
Daikagura High Hat Pink	5.75	6.50	
Daikagura Red	4.75	5.50	
Daikagura Variegated	3.75	4.50	
Debutante Pink	3.75	4.50	
Duc. of Sutherland White	4.75	5.50	
Emperor of Russia Red	3.75	4.50	
Gen Patton Pink Purity	3.75	4.50	
Glen Forty Red	4.75	5.50	
Herme Variegated	3.75	4.50	
Kumasaka Pink	3.75	4.50	
Lady Clare Pink	3.75	4.50	
Magnoliaeflora Pink	5.75	6.50	
Margaret Hertrick White	5.75	6.50	
Martha Brice Pink	5.75	6.50	
Mathotiana Rubra Red	4.75	5.50	
Pax Laurel Leaf White	4.75	5.50	
Pink Perfection Pink	3.75	4.50	
Red Perfection Red	4.75	5.50	
			Total \$



IF OUT - May we substitute? ( ) Should you prefer to name the alternates write letter S in front of names. Substitutions will not be made unless it is requested. If the selecting is left to us, or order is by color only, we will then have more kinds to choose from and usually are able to pick those plants which may be larger or of better appearance and characteristics.

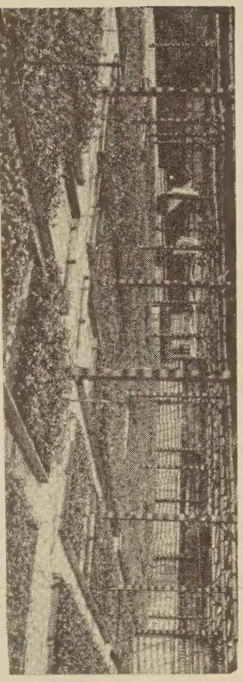
SEND ( ) CASES - (50) PLANTS TO THE CASE. My Order Is For ( ) Plants.

SHIP TO - \_\_\_\_\_ Amount Enclosed \$ \_\_\_\_\_

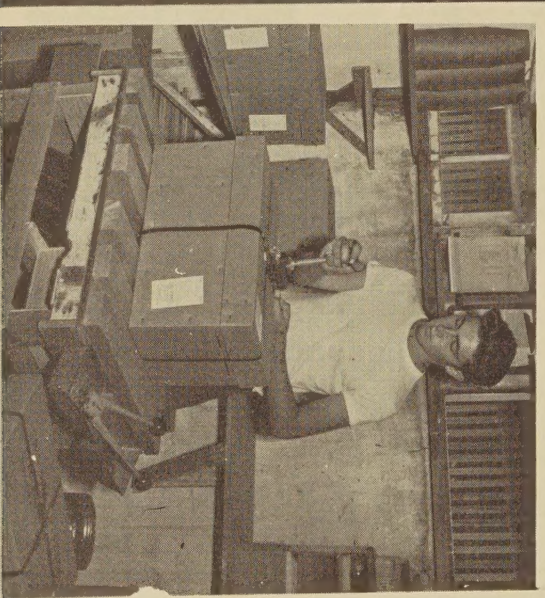
Cash with Order - No COD'

Date \_\_\_\_\_





The care lavished on growing Tormey camellias is carried through packing and shipping to your very door. Each carefully labelled plant is individually wrapped, and placed upright in the shipping case. The young plants it carries reach you as fresh as the moment they left our establishment.





## WANT TO READ PARTS OF OUR MAIL ?

*Young plants were grown to bud stage - overtaking older dug plants - requiring re-growing.*

"The plants we got from you last year were wonderful and are looking fine now with their new crop of buds - we will appreciate some more of your fine quality plants - I am enclosing our check to cover the 200 plants on this order - -"

*We sell complete plants - not real estate by the chunk -*

"Thanks for such lovely plants - customers think they are fine - growing in the containers - they can be sold right away - they only weigh five pounds - not fifty like those balled plants - dug with cut roots - that never catch up with yours".

*Buyers were skeptical - now have their own proof of the superiority of Tormey's basic improvements of strains and growing methods.*

"The plants we purchased from you last year are all in bud now - they out grew much older and larger plants purchased elsewhere - and which cost us twice as much and still are being nursed along - I guess they will have to grow new roots and never catch up with yours -"

*Time goes on - yours never to regain -*

"Your plants are received in perfect condition and are not checked at all - I can buy plants cheaper than yours - they get stunted - lose their leaves - die back - slow to get started - which all adds up to costlier plants in the long run - -"

*The one best - Proof Positive after 2 year growing performance comparison -*

"A couple of years ago I ordered some camellias from you and they are doing splendidly - I also ordered some elsewhere and they nearly all died - Please ship this order for 60 of your plants in containers at once -"

*Not so far as you may think -*

"My order arrived in perfect condition - thanks for your amazing prompt handling - the plants were delivered to my door - on the fifth day after ordering and there is a lot of distance between here and California -"

*No matter the weather - no matter the place -*

"The plants came through in fine shape - Had some very cold weather at the time five degrees below zero -"

*Distance makes no difference -*

"All of the camellias we received from you are thriving - with some three thousand miles of travel - this speaks for itself - the vitality of your plants and the expert manner of packing for shipment shows the care you give your customers value -"

*Indoors ----- when it's freezing outdoors*

"Camellias came Tuesday - when the snow was flying - in marvelous condition - have placed them in unheated place - with two sides open to the light - with plenty of fresh air ventilation - I find that I get better flowers indoors this way -"

*This kind of a growing business pays off -*

"All the plants I got from you are wonderful trade builders - and our customers always want those Tormey camellias that are growing in the pots -"

*Strain more important than name - Proof positive -*

"Our customers like your strains - and come back for more - it seems the plants of same varieties we have purchased from other growers - do not give such fine flowers - you must be a scientist to breed up the strains to such perfection -"

*You can un-pack plants ready to sell within minutes - without fuss or muss - in your "best room".*

"I have been in business for twenty years - ordering from a number of places - but I have never had any plants packed and received in such good condition and so easy to un-pack - thanks for all your kindness - my last order came this week -"

*Over the years -*

"Every camellia that you have ever sent to me was all that you claimed for it and all now growing fine and budding splendidly - Am really sold on your container grown camellias - I really like to do business with you too -"

*Ours is a growing business - with our kind of Plants - Yours can be a "growing selling business" -*

"The three cases of my camellias all arrived in the best of condition this A.M. - these are fine plants - I have been growing camellias for twenty years - these are the best I have ever seen - you sure must have a secret to produce such plants -"

*Customer Confidence - They know they get nothing but the best - always -*

"Our previous order is in excellent condition - we appreciate the quality of your plants - we are enclosing our check for the following: --- and if substitution is necessary you will not need to communicate with us - because we will be happy with any choice you may make."

*Now knows there is a difference -*

"The plants came yesterday and they were in good shape - They were the best packed plants that ever came to our place - I have been afraid to order from way out there as I had one order come all broken up once - as it was not half packed - but now I know where to order - many thanks -"

*After country-wide comparative test with more than 30 Tormey strains*

"A U.S. Dept. of Agriculture - writes - Attached is our order for two hundred camellia plants - we were delighted with similar plants secured from you last year -"

*No substitution unless requested -*

"It is a pleasure to deal with the right kind of people - I am returning your refund check - because I want you to substitute and fill the order with any varieties you suggest -"

*Test of time - growing performance - the only true proof of value.*

"I am delighted with all of the camellias - I have bought from you - they are superior and priced for less than their value - you are one of the nicest grower to deal with -"

*Nothing unusual to old customers -*

"The plants arrived and as usual - they are in perfect shape - nice plants and everything nice that I can say to you -"

*Perfect strains and growing methods - assures against loss - All live to grow -*

"Enclosed is our check to cover the enclosed order for 150 camellias - the hundred plants we received from you last spring - are just about as nice as we have ever seen - and have not lost a single one -"

*Never stop growing -*

"The camellias arrived this morning in excellent condition - the plants I bought from you last year - grew right off without stopping -"

# TORMEY'S

MAIL ADDRESS BALDWIN & GREEN ST.  
P.O. BOX 428 Phone ATLANTIC 68952  
TEMPLE CITY, CALIFORNIA



